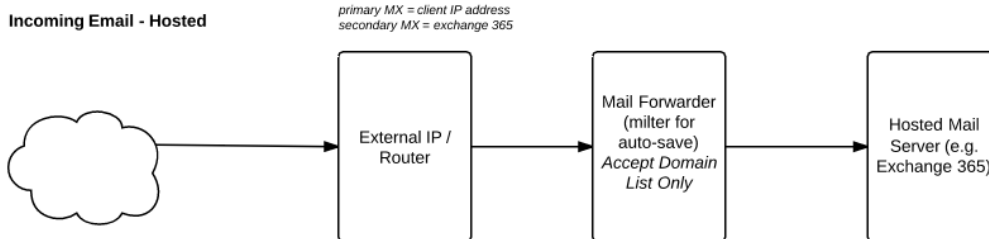
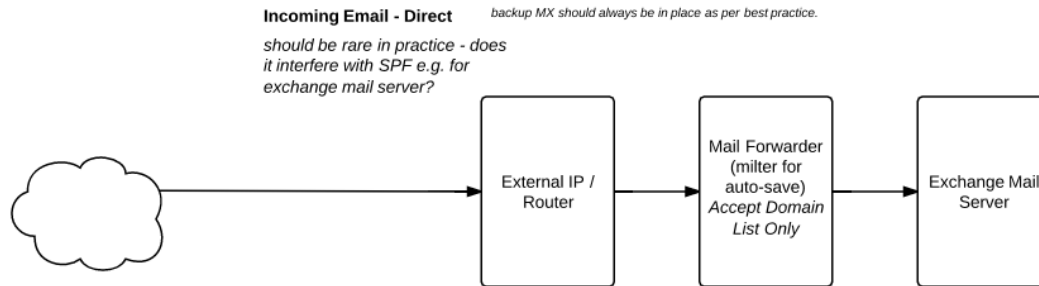
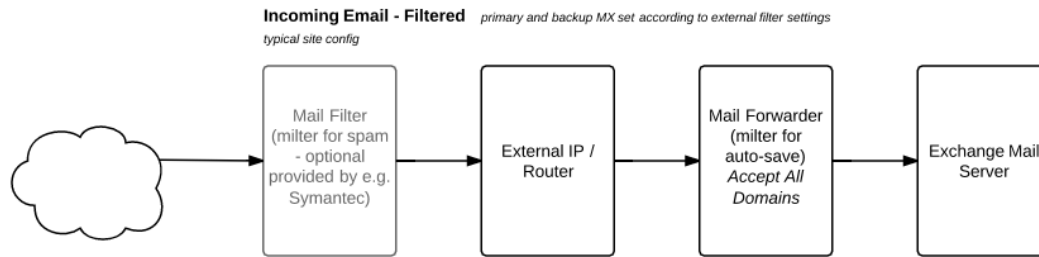
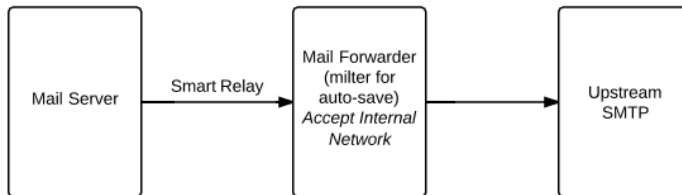


# Mail Filter Container Design

Configurations to consider: Filtered, Direct or Hosted



**Outgoing Email (for all types)**



Configuration Elements:

Type	Sample Value	Notes/Info
Internal networks		For internal networks, we will relay to upstream SMTP. How should we set this config value?
Upstream SMTP		This could be the company ISP, or an authenticated SMTP service such as mandrill app. SPF record should be checked/set for any upstream SMTP used for from domain (manual check). How should we set upstream config value? e.g. server, and optional user/pass? or some other way?

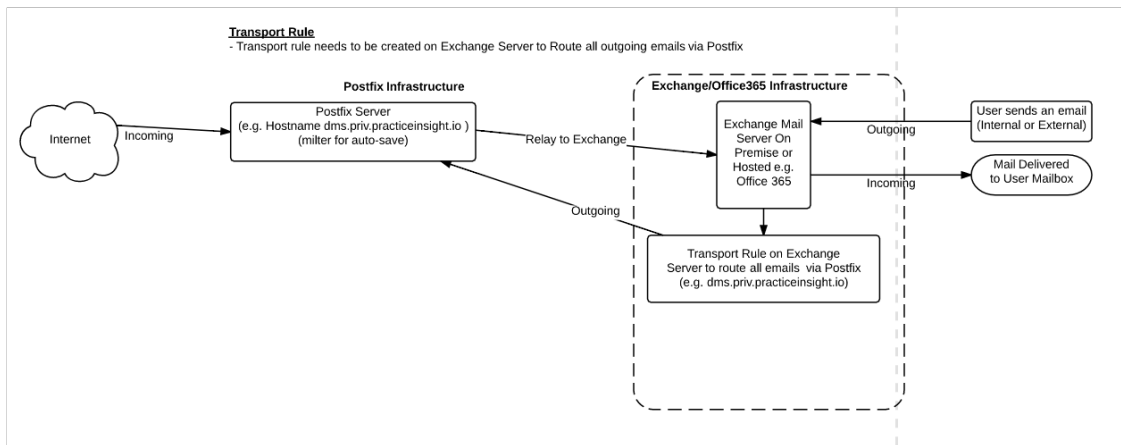
Accepted Domain List	The domains we accept email for (forwarded to primary mail server).
Relay Domain Destination	Where to send email for accepted domain list to (the on premise exchange server).

## Option 0: Transport Rule on Exchange Server to Route all mails via Postfix smarthost

(Inbound: Internet→Postfix→Exchange→Deliver to Mailbox)

(Outbound-Internal Emails: Client→Exchange→Postfix→Exchange→Delivered to Mailbox)

(Outbound-External Emails: Client→Exchange→Postfix→Internet)



## Example of Transport Rule in Exchange (Command line OR GUI Admin Console )

```

PS C:\Users\Administrator> New-TransportRule -Name "RouteAllMailsViaPostfix" -FromScope Inorganization -RouteMessageOutboundConnector "RouteViaPostfix"

Name                               State      Mode      Priority Comments
----                               -
RouteAllMailsViaPostfix            Enabled   Enforce    0

PS C:\Users\Administrator>
  
```

## RouteAllMailsViaPostfix

Name:

RouteAllMailsViaPostfix

\*Apply this rule if...

The sender is located... ▼

[Inside the organization](#)

add condition

\*Do the following...

Use the following connector... ▼

[RouteViaPostfix](#)

add action

Except if...

add exception

Properties of this rule:

Priority:

0

Audit this rule with severity level:

Not specified ▼

## Example of Send Connector in Exchange

Mail flow scenario

From: Office 365

To: Your organization's email server

Name

RouteViaPostfix

Description

None

Status

Turn it on after saving

When to use the connector

Use only when I have a transport rule set up that redirects messages to this connector.

Routing method

Route email messages through these smart hosts: utm.practiceinsight.io

Security restrictions

None

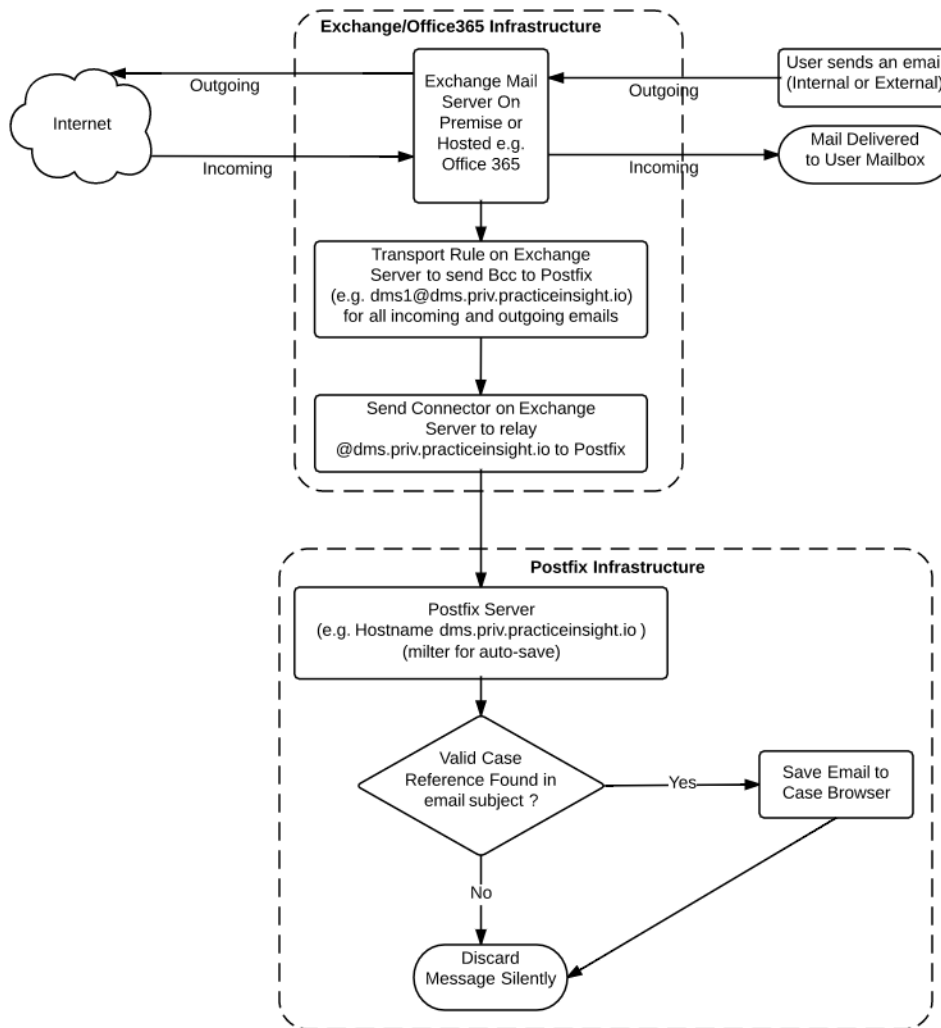
## **Option1: Transport Rule on Exchange Server for both Incoming and Outgoing Mails**

**(Inbound: Internet→Exchange (&&Bcc→Postfix)→Deliver to Mailbox)**

**(Outbound: Client→Exchange (&& Bcc→Postfix)→ Internet)**

**Transport Rule Approach**

- Transport rule needs to be created on Exchange Server to Bcc all mails (incoming and outgoing) to Postfix



**Example of Transport Rule in Exchange**

[Apply to all messages]

Name:

[Apply to all messages]

\*Apply this rule if...

[Apply to all messages]

\*Do the following...

Bcc the message to...

['dms1@dms.priv.practiceinsight.io'](mailto:dms1@dms.priv.practiceinsight.io)

Properties of this rule:

Priority:

0

Audit this rule with severity level:

[Not specified]

Choose a mode for this rule:

- Enforce
- Test with Policy Tips
- Test without Policy Tips

[More options...](#)

 Rights Management Services (RMS) is a premium feature that requires an Enterprise Client Access License (CAL) or a RMS

Save

Cancel

## Example of Send Connector in Exchange

## Mail flow scenario

From: Office 365

To: Your organization's email server

## Name

Relay dms.priv.practiceinsight.io to Postfix

## Description

None

## Status

Turn it on after saving

## When to use the connector

Use only for email sent to these domains: dms.priv.practiceinsight.io

## Routing method

Route email messages through these smart hosts: dms.priv.practiceinsight.io

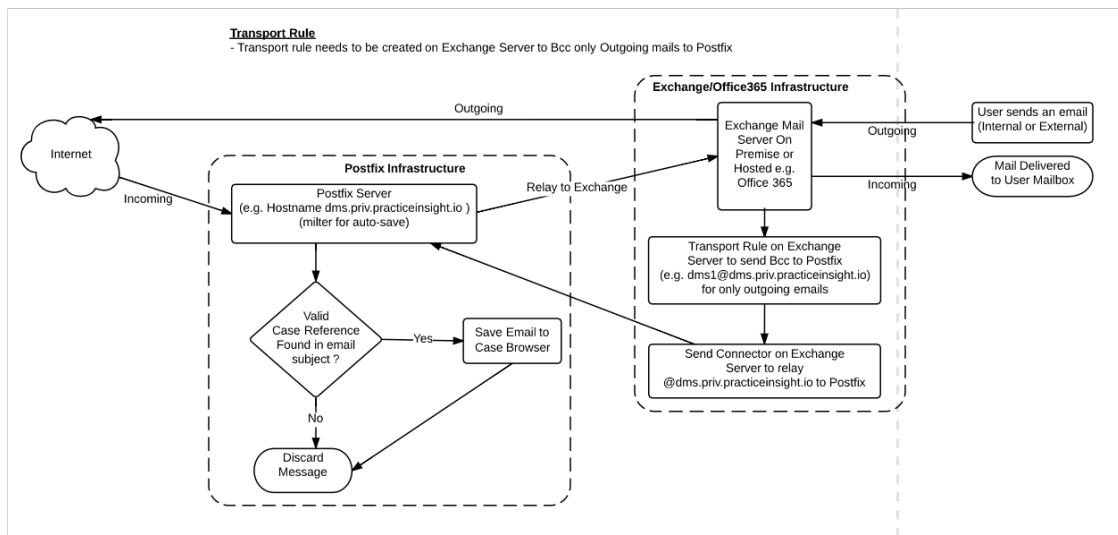
## Security restrictions

None

## Option2: Transport Rule on Exchange Server for only Outgoing Mails

(Inbound: Internet→Postfix→Exchange→Deliver to Mailbox)

(Outbound: Client→Exchange (&& Bcc→Postfix)→Internet)



## Example of Transport Rule in Exchange

 <https://outlook.office365.com/ecp/RulesEditor/EditTransportRule.aspx?reqId=1456134888799&pw..>

Received from scope Inside the organization

Name:

Received from scope Inside the organization

\*Apply this rule if...

The sender is located...

[Inside the organization](#)

\*Do the following...

Bcc the message to...

['dms1@dms.priv.practiceinsight.io'](mailto:dms1@dms.priv.practiceinsight.io)

Properties of this rule:

Priority:

1

Audit this rule with severity level:

Not specified

Choose a mode for this rule:

Enforce

Test with Policy Tips

Test without Policy Tips

[More options...](#)

 Rights Management Services (RMS) is a premium feature that requires an Enterprise Client Access License (CAL) or a RMS

Save

Cancel

## Example of Send Connector in Exchange



Mail flow scenario

From: Office 365

To: Your organization's email server

Name

Relay dms.priv.practiceinsight.io to Postfix

Description

None

Status

Turn it on after saving

When to use the connector

Use only for email sent to these domains: dms.priv.practiceinsight.io

Routing method

Route email messages through these smart hosts: dms.priv.practiceinsight.io

Security restrictions

None